

by VINCENT SALANDRO

1. Double-Duty Wall Membrane

For starters, the vapor permeability of Benjamin Obdyke's VaporWise interior membrane changes along with seasonal changes in humidity levels. When humidity is low, the vapor-variable membrane acts as a Class II vapor retarder. As humidity increases, the membrane's permeability increases, allowing moisture to escape, helping to dry the wall cavity. Additionally, a layer of reinforced mesh adds strength, and a translucent outer layer enables installers to monitor insulation blown into the cavities. A 59-inch-by-164-foot roll covers 806 square feet. We found prices that vary from around \$380 to \$430. benjaminobdyke.com



2. Low-Profile Floating Shelf Bracket

Made with American steel, the Thin Floating Shelf Bracket from Federal Brace has a minimal profile. When you attach the brackets directly to wall studs before installing drywall, their bases are completely hidden, making the shelf appear to float. Though the bases are visible if you attach them to studs through drywall, the slim profile remains unobtrusive. Brackets support up to 50 pounds and hold shelves up to 10 inches deep. Brackets cost \$25 each. federalbrace.com



3. Smart Light Dimmer

Leviton's Decora Smart Wi-Fi 0-10V Dimmer adds smart control to 0-10V dimmable LED drivers and electronic fluorescent ballasts. It features an adjustable soft fade; dimming range can be adjusted on either the device or the My Leviton app. With the app, users can also set the dimmer to always come on at a certain light level as well as control the dimmer remotely. Installers can choose 0-10V linear or logarithmic dimming modes. It costs about \$90 online. leviton.com

4. Eco-Friendly, Design-Forward Surfaces

Caesarstone Icon surfaces contain approximately 80% recycled materials and almost no crystalline silica. According to the company, the product's design and eco-friendly manufacturing practices reduce waste. Though the surfaces contain less than 1% crystalline silica, the company advises installers to follow safety protocols for stone, including working with wet tools, wearing a protective mask, and ensuring proper ventilation. caesarstoneus.com



Products

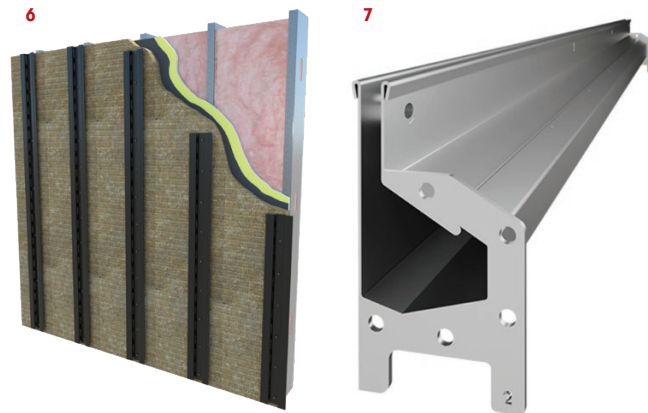


5. Adjustable Sliding Door Hardware

Ideal for bedrooms, hallways, and guest rooms, 1138 Series Sliding Bypass Door Hardware from Johnson Hardware features a top-hung, rolled steel track with a convex rail that the manufacturer says ensures smooth, quiet gliding. The adjustable side-mount hanger plates and door guides help eliminate installation guesswork and the need to relocate screws when fine-tuning. The hardware is compatible with 1 3/8-inch-thick doors. Sets include all hardware for two- or four-door installations. johnsonhardware.com

6. Vertical Rainscreen and Cladding Support

Designed for use over exterior continuous insulation, ProChannel Ci-Vertical steel rails from ClarkDietrich support exterior wall cladding and create a 7/8-inch rainscreen. The hat-channel-type rails come with preassembled (screw and sleeve) Trufast Grip-Deck TubeSeal fasteners; lengths depend on the combined thickness of the insulation, WRB, and sheathing they need to penetrate. Rails are also available in a black finish for open-joint cladding. clarkdietrich.com



7. Stainless-Steel Linear Drains

Slot Drains from Landscape Drains are linear, stainless-steel, in-ground drains designed to drain paved and landscaped areas without unsightly grates or landscape swales. Made of T304 or T316 stainless steel, the drains have a 1/2-inch slot that is nearly invisible when installed. The 4000 Series (shown) features one flat side for installation against walls. Other models for high-volume drainage (6000 Series) and less-costly PVC bodies below grade (3000 Series) are available. landscapedrains.com



8. Gun-Grade Liquid Flashing

Typar's Liquid Flashing is a gun-grade elastomeric liquid flashing designed for air- and water-sealing window and door sills and bottom wall plates, air-barrier joint details, and other challenging applications in both new and existing wall assemblies. It is a hybrid STPE/SMP formulation and reportedly stretches 325% before breaking. Rated at 14 perms, the flashing has a 50°F to 180°F application range and bonds to most surfaces without primer, according to Typar. It is tack-free in 20 minutes and paintable within 48 to 72 hours. It is available in 20-ounce sausages and 2-gallon buckets for bulk loading guns. typar.com

9. Stainless-Steel Outdoor Cabinetry

The Trex Ready series of outdoor, stainless-steel cabinetry offers seven predesigned layouts in six UV-resistant powder coat finishes. The Veranda model (shown) features a grill with a side-burner cabinet to the left of the grill cabinet. The model also provides a space for undercounter refrigeration and a pull-out cabinet for trash. All models come standard at a 30-inch height and 27-inch depth, with 4-inch leveler legs and 24-inch depths available. trex-outdoorkitchens.com



10. Self-Adhered Air and Water Barrier

Sto Corp.'s StoShield SA high-performance, self-adhered air- and water-resistive barrier is available in two configurations. The StoShield SA VP is a vapor-permeable barrier that resists air leakage and water intrusion, while allowing water vapor to escape and the assembly to dry. A non-permeable version—StoShield SA NP—resists air, water, and vapor movement and is designed to protect above-grade concrete and masonry walls in commercial applications. Both membranes adhere without primer to most substrates in temperatures down to 20°F. stocorp.com



11. Pivot Roof Pipe Boot

A ball-and-socket component that adjusts for roof pitch (from 3:12 to 12:12) helps Master Flow's Pivot Pipe Boot Flashing protect against leaks at plumbing vent pipe penetrations, according to GAF. Designed with an all-metal exterior body, the boot is available in 1½-, 2-, 3-, and 4-inch sizes, as well as in several colors to better match roofing materials. The manufacturer claims the boot eliminates the need for gaskets, caulks, or rubber seals. We found them for about \$50 to \$60 online. gaf.com

12. Adjustable Deck Pedestal System

The Bison LevelUp Adjustable Deck Pedestal System replaces concrete footers and posts for decks up to 20 inches high (including the surface) with telescoping pedestals that the company says allow for fast, precise height adjustments. Each pedestal reportedly can support up to 750 pounds and accommodate grades up to an 8% slope. Bison reports that the pedestals are manufactured in the U.S. with 20% post-consumer recycled materials and are weather-, freeze-, and mold-resistant. We found a kit with 12 pedestals for about \$280 online. level-updecking.com

